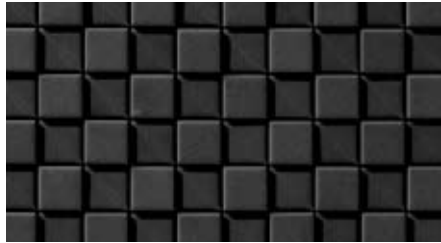


**Chiaroscuro**



Black



White

**Furacture**

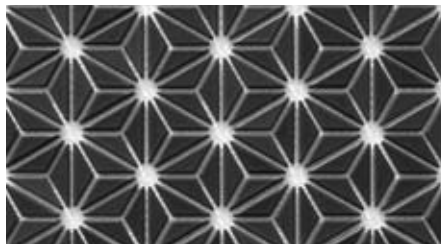


Gaudi Black

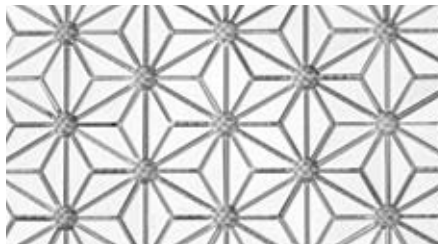


Matisse White

**Hoshi**



Black



White

**Shibata**



Black



White

---

Description	Chiaroscuro
Style	Mesh-Mounted Mosaic
Tile Size	10.3" x 10.3"
Thickness	.3125" (0.8cm)
Application	Interior/Exterior, Vertical Surfaces Only

---

Description	Furacture
Style	Mesh-Mounted Mosaic
Size	12" x 11"
Thickness	.3125" (0.8cm)
Application	Interior/Exterior, Vertical Surfaces Only

---

Description	Hoshi
Style	Mesh-Mounted Mosaic
Tile Size	12.4" x 9.5"
Thickness	.25" (0.6cm)
Application	Interior/Exterior, Walls/Floors

---

Description	Shibata
Style	Tile
Tile Size	3.9" x 3.9"
Thickness	.9" (2.3cm)
Application	Interior/Exterior, Vertical Surfaces Only

---

*During the manufacturing process, ceramic tile is molded and fired to its respective shape. Color is then applied to the tiles and fired again. Variations in color and texture are inherent to the product and are considered to be a desired feature in the material. Please contact us for a sample of our current assortment.*

---